

SPECORD® and SPEKOL®

Application in brewery analysis



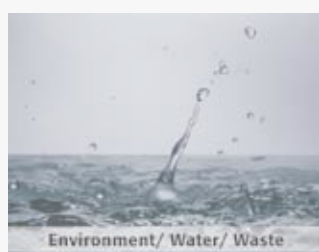
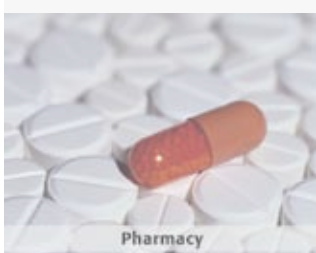
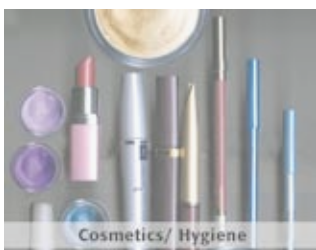
Beer analysis – easy to realize

Germany is the home country of good beers. There are so many different kinds of beer on the market, like plane ale, brown ale, wheat beer and others. For all these different beers there are standard norms for the measurement of their ingredients and quality parameters. These standard norms are defined from MEBAK (central- European brewery technological analysis commission) and ECB (European Brewery convention).

The application kit for the brewery analysis for the UV VIS spectrophotometers SPECORD® and SPEKOL® of Analytik Jena includes high performance spectralphotometers disposable for brewery analytics.

Our special software with pre-programmed methods for the specific application of brewery analysis complies with MEBAK and EBC norms. The measuring procedure as well as result calculation is more easily achieved by this software.

Special equipment for automation like a sipper system or a cell changer afford a high sample through put.

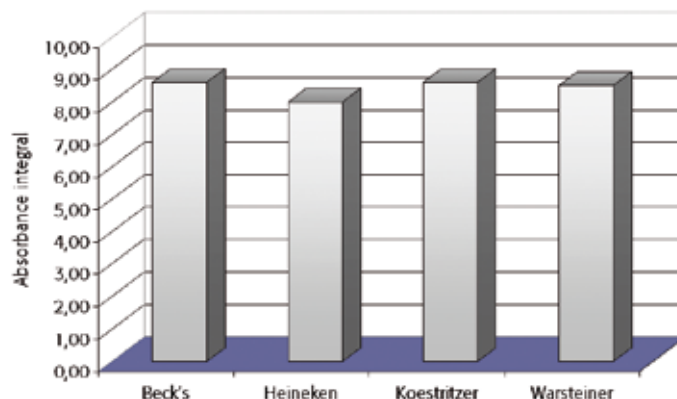


SPECORD® and SPEKOL® – application in brewery analysis

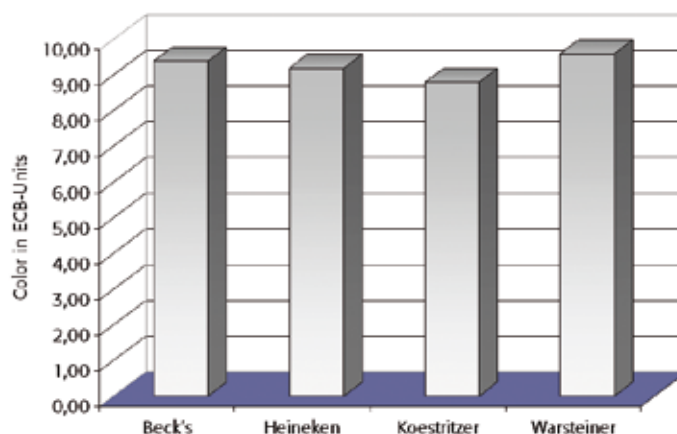
For the quality control of beer with the spectrophotometer of Analytik Jena the following photometric methods can be applied.

Photometric methods for beer analysis:

- Free amino nitrogen (FAN)
- Color (EBC-Method)
- Total polyphenole
- Anthocyanogene
- Bitter substances
- Alpha acid
- Vicinale Diketone
- Iodine
- Sulfite
- Ethanol (Ethyl alcohol)
- Absorbance integral



Absorbance Integral



Color (EBC-Method)

Recommended instrumentation

Simple instrumentation

Device option	SPEKOL® 1300	821-13002-2
	SPEKOL® 1500	821-15002-2
Accessory	SPEKOL® cell holder for 50 mm cells	820-60214-0
Software	WinASPECT® (for SPEKOL® 1300/1500)	820-60256-0
	Module brewery analysis	820-60220-0

Instrumentation for automation

Device option	SPECORD® 40	822-00401-2
	SPECORD® 50	822-00501-2
Accessory	Sipper	820-60141-0
Software	6 cell changer for cells up to 50 mm	820-60126-0
	Module brewery analysis	820-60220-0

Analytik Jena AG
Konrad-Zuse-Straße 1
07745 Jena/ Germany

Phone +49/ 36 41-77 70
Fax +49/ 36 41-77 92 79

info@analytik-jena.com
www.analytik-jena.com



Subject to changes in design and scope of delivery
as well as further technical development!